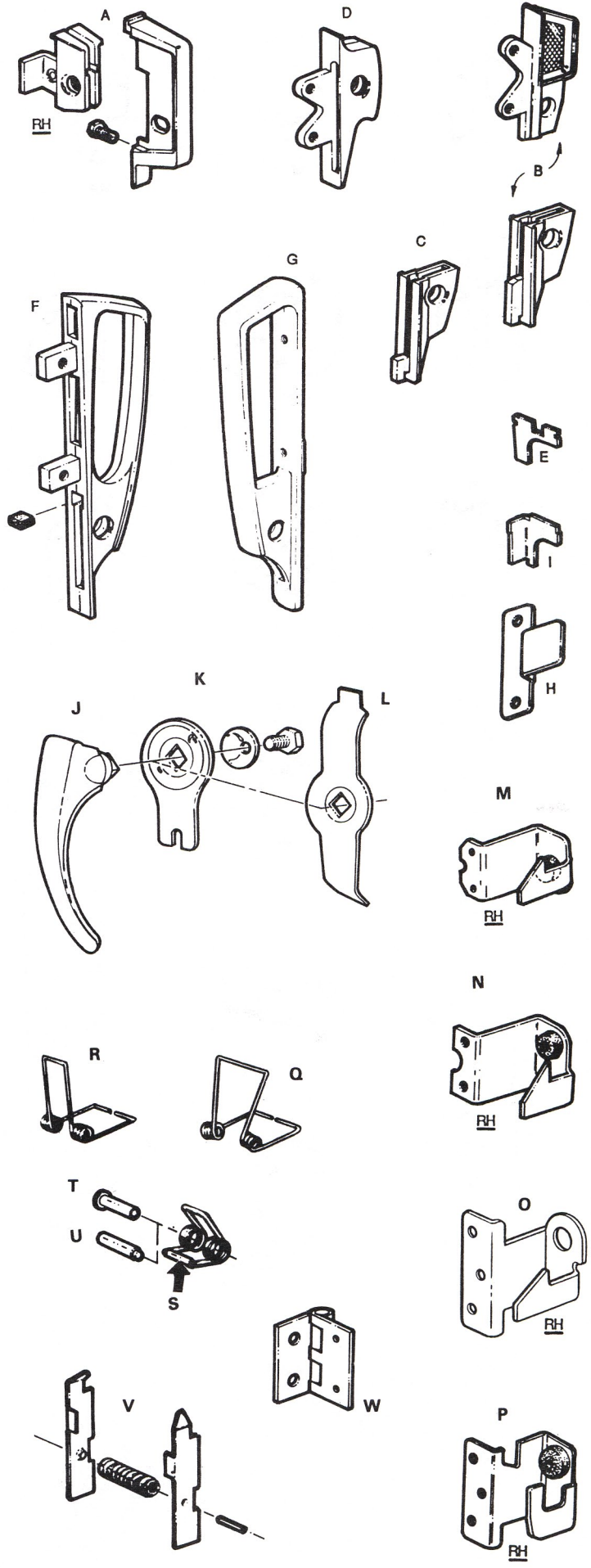


Medart

- A. #50101 (R.H.) / #50102 (L.H.)
Standard 2-Piece Handle
#50103 (R.H.) / #50104 (L.H.)
Handle Lift ONLY
#50105
Handle Case ONLY
- B. #50107
Standard 2-Piece Handle
- C. #50109
Modified 2-Piece Handle
- D. #50111
Locker Handle
- E. #50701
Padlock Hasp
- F. #50113
Locker Handle
- G. #50115
Locker Handle
- H. #50116
Lockrod Lift
- I. #50703 (R.H.) / #50704 (L.H.)
Padlock Hasp
- J. #50121
Turn Type Handle
#51701
Cup Washer ONLY
#52005
Bolt ONLY for T T Handle
- K. #50123
Short Flat Cam Lever
- L. #50124
Long Flat Cam Lever
- M. #50301 (R.H.) / #50302 (L.H.)
Doorstop
- N. #50303 (R.H.) / #50304 (L.H.)
Doorstop
- O. #50305 (R.H.) #50306 (L.H.)
Doorstop
- P. #50307 (R.H.) / #50308 (L.H.)
Doorstop
- Q. #51501
Lockrod Spring
- R. #51503
Lockrod Spring
- S. #50501
Roller for Lockrod Spring



MEDART

Description continued on Page 11.